

# KAYLA RENEE

PAPER CRAFTER

## Attention Shoppers - Gift Card Holder

[www.kaylarenee.com](http://www.kaylarenee.com)



# Supply List

all supplies can be purchased in my online store find at [www.kaylarenee.com](http://www.kaylarenee.com)



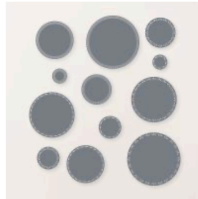
Attention Shoppers Bundle  
(English)  
[163644]



More Than Autumn Bundle  
(English)  
[164076]



Labeled With Love Punch  
[163569]



Spotlight On Nature Dies  
[163580]



Sentimental Christmas 12" X  
12" (30.5 X 30.5 Cm) Designer  
Series Paper  
[164209]



Silver 12" X 12" (30.5 X 30.5  
Cm) Foil Sheets  
[163387]



Real Red & White Adhesive  
Backed Peppermints  
[164050]



Pool Party 5/8" (1.6 Cm)  
Pompom Ribbon  
[164129]



Clear Wink Of Stella Glitter  
Brush  
[141897]



Summer Splash Stampin'  
Blends Combo Pack  
[163826]



Pool Party Stampin' Blends  
Combo Pack  
[154894]



Poppy Parade Stampin' Blends  
Combo Pack  
[154958]



Crumb Cake Stampin' Blends  
Combo Pack  
[154882]



Pecan Pie Stampin' Blends  
Combo Pack  
[161674]



Shaded Spruce Stampin' Blends  
Combo Pack  
[154903]



Tuxedo Black Memento Ink  
Pad  
[132708]



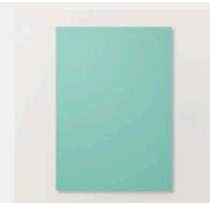
Poppy Parade Classic Stampin'  
Pad  
[147050]



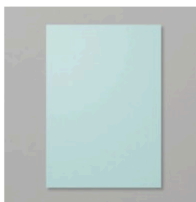
Pool Party Classic Stampin'  
Pad  
[147107]



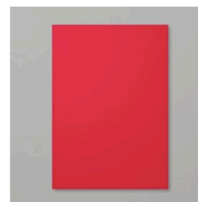
Summer Splash Classic  
Stampin Pad  
[163809]



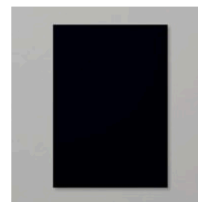
Summer Splash A4 Cardstock  
[154798]



Pool Party A4 Card Stock  
[124391]



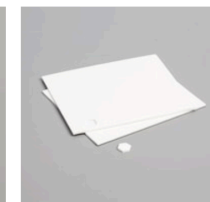
Poppy Parade A4 Cardstock  
[121694]



Basic Black A4 Card Stock  
[121688]



Basic White A4 Thick  
Cardstock  
[159230]



Stampin' Dimensionals  
[104430]

Kayla Renee

Just For You

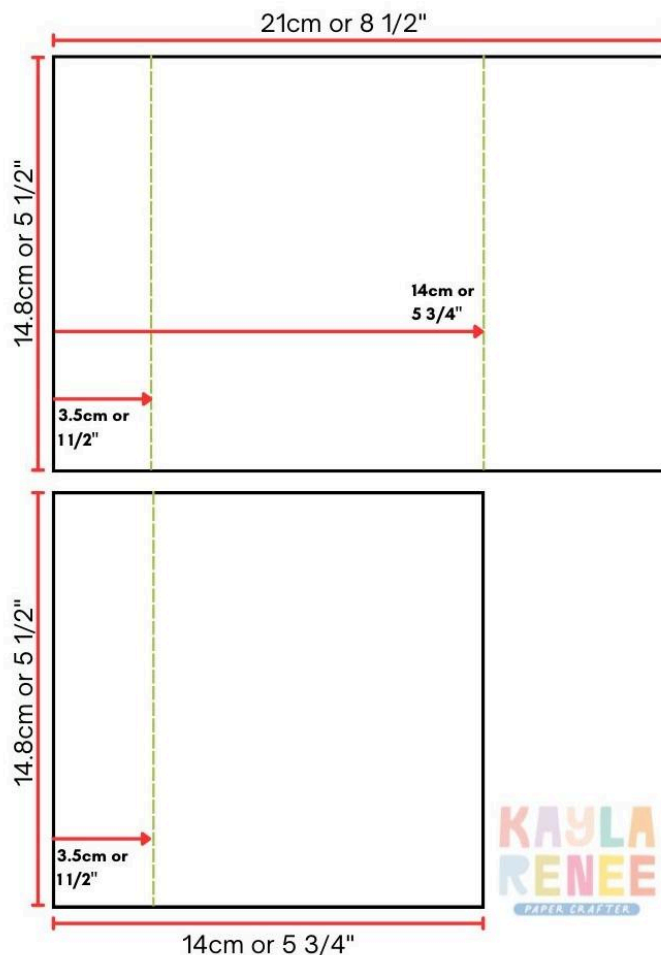


## Measurements

| Paper  | No of Pieces | Metric Measurement                       | Imperial Measurement                         |
|--|--------------|--|--|
| <b>Summer Splash Cardstock Base</b>  | 1            | A4 Cardstock Sheet<br>Cut as per diagram | Letter Cardstock Sheet<br>Cut as per diagram |
| <b>Sentimental Christmas DSP Red Stripe</b>                                      | 1            | 10.2cm x 14.6cm                          | 4 1/8" x 5 3/8"                              |
| <b>Sentimental Christmas DSP Snowflake</b>                                       | 1            | 10.2cm x 14.6cm                          | 4 1/8" x 5 3/8"                              |
| <b>Sentimental Christmas DSP Snowflake</b>                                       | 1            | 6.8cm x 14.6cm                           | 2 5/8" x 5 3/8"                              |
| <b>Sentimental Christmas DSP Red Stripe</b>                                      | 2            | 3.3cm x 14.6cm                           | 1 3/8" x 5 3/8"                              |
| <b>Pool Party Cardstock</b>  | 1            | 6.8cm x 14.6cm                           | 2 5/8" x 5 3/8"                              |
| <b>Basic White Cardstock</b>   | 1            | 10.2cm x 14.6cm                          | 4 1/8" x 5 3/8"                              |
| <b>Scraps of; Poppy Parade, Basic Black, Basic White Thick &amp; Silver Foil</b> |              | Scraps for die cutting & stamping        | Scraps for die cutting & stamping            |

# Instructions

1. Cut and score the card base from the whole sheet of cardstock using the dimensions and directions below. This almost uses a whole sheet of cardstock.




2. Add the small piece of red striped Designer Paper to the smallest scored panel on both pieces. Using the label punch; line this up to punch a 'notch' out of the long edge of ONE of these pieces.
3. Fold the two 3.5cm (or 1 ½) flaps back upon each other and add tape to the bottom long edge and each short side to adhere these together making sure that the red stripe designer paper faces outward to create a pocket.
4. This should now all fold together to create a card base with a 'flap' Adhere the snowflake and striped Designer Paper to both the inside and outside flap where shown.
5. Stamp four gift bags from the Attention Shoppers stamp set and several small candy canes and gingerbread men from the More Than Autumn

stamp. Colour these images with coordinating Stampin' Blends and die cut all these pieces out.

6. Die cut out 3 x Basic Black shopping trolleys and 1 x base trolley in Basic Black and 1 x in Silver Foil. Cut out the handle of the trolley only in Silver Foil. Adhere the black trolley pieces together three high to create a dimensional trolley (to make it easier you can use an Adhesive Sheet). Add the small Silver Foil handle on top and then cut the black base to show only the wheels and cut off the wheels on the silver - adhere these two pieces together to get a two toned look. Adhere to the trolley.
7. Inside the trolley place the three gift bags and an assortment of candy canes and gingerbread. Adhere the trolley over the top. Set aside.
8. Take the piece of Pool Party Cardstock and add some lightly blended Pool Party Ink to the outside edges of this piece and spritz with Summer Splash Ink. Add this to the front flap.
9. Die cut out two circles using the Spotlight on Nature dies in Poppy Parade. Add some lightly blended Poppy Parade Ink to the edges. Add this to the front flap with Stampin' Dimensionals on one side.
10. Adhere the trolley over the top with Stampin' Dimensionals and finish with sentiment in Memento Black adhered on top. Decorate with some Peppermint embellishments and some Wink of Stella.
11. Take the piece of Basic White and add some Pool Party blending in the bottom right corner and some Summer Splash spritzing. Add some of the additional die cut elements and stamp a sentiment in Summer Splash. Adhere to the middle of the card.
12. Finish the card by tying a bow around the outside in the Pompom trim.



**VIDEO TUTORIAL CLICK:**

 [How to Make a Stampin' Up! Gift Card Holder](#)