

# KAYLA RENEE

PAPER CRAFTER

## Changing Leaves - Z Fold Bridge Card

*inspired by Jennifer at Evasions Creatives*

[www.kaylarenee.com](http://www.kaylarenee.com)



# Supply List

all supplies can be purchased in my online store find at [www.kaylarenee.com](http://www.kaylarenee.com)



Changing Leaves Bundle  
(English)  
[164139]



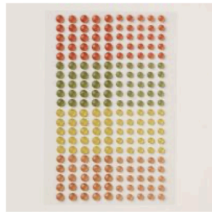
2024-2026 In Color™  
Glimmer 12" X 12" (30.5 X  
30.5 Cm) Specialty Paper  
[163771]



Season Of Elegance 12" X 12"  
(30.5 X 30.5 Cm) Specialty  
Designer Series Paper  
[164144]



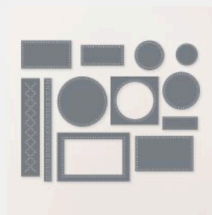
Woven Golden Leaves  
[164059]



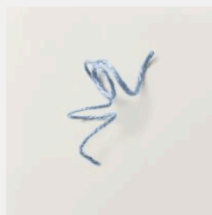
Faux Glass Dots  
[164060]



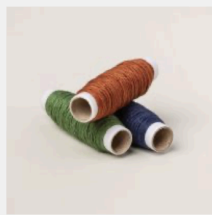
Clear Wink Of Stella Glitter  
Brush  
[141897]



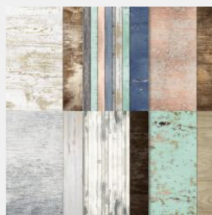
Everyday Details Dies  
[162864]



2023-2025 In Color Jute Trim  
[161637]



Natural Tones Linen Thread  
[164071]



Country Woods 12" X 12"  
(30.5 X 30.5 Cm) Designer  
Series Paper  
[163393]



Autumn Expressions Cling  
Stamp Set (English)  
[164174]



Calypso Coral Stampin' Blends  
Combo Pack  
[154881]



Wild Wheat Stampin' Blends  
Combo Pack  
[161661]



Peach Pie Stampin' Blends  
Combo Pack  
[163827]



VersaMark Pad  
[102283]



Basics Wow! Embossing  
Powder  
[165679]



Wild Wheat Classic Stampin'  
Pad  
[161651]



Calypso Coral Classic Stampin'  
Pad  
[147101]



Copper Clay Classic Stampin'  
Pad  
[161647]



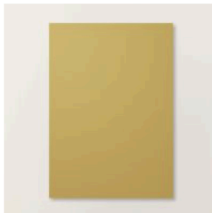
Crushed Curry Classic  
Stampin' Pad  
[147087]



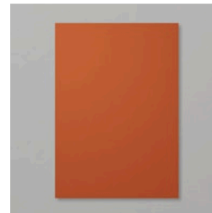
Cajun Craze Classic Stampin'  
Pad  
[147085]



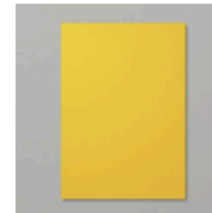
Real Red Classic Stampin' Pad  
[147084]



Wild Wheat A4 Cardstock  
[161734]



Cajun Craze A4 Card Stock  
[121683]



Card Stock A4 Crushed Curry  
[131288]



**Kayla Renee**

Have a Perfectly Lovely Day

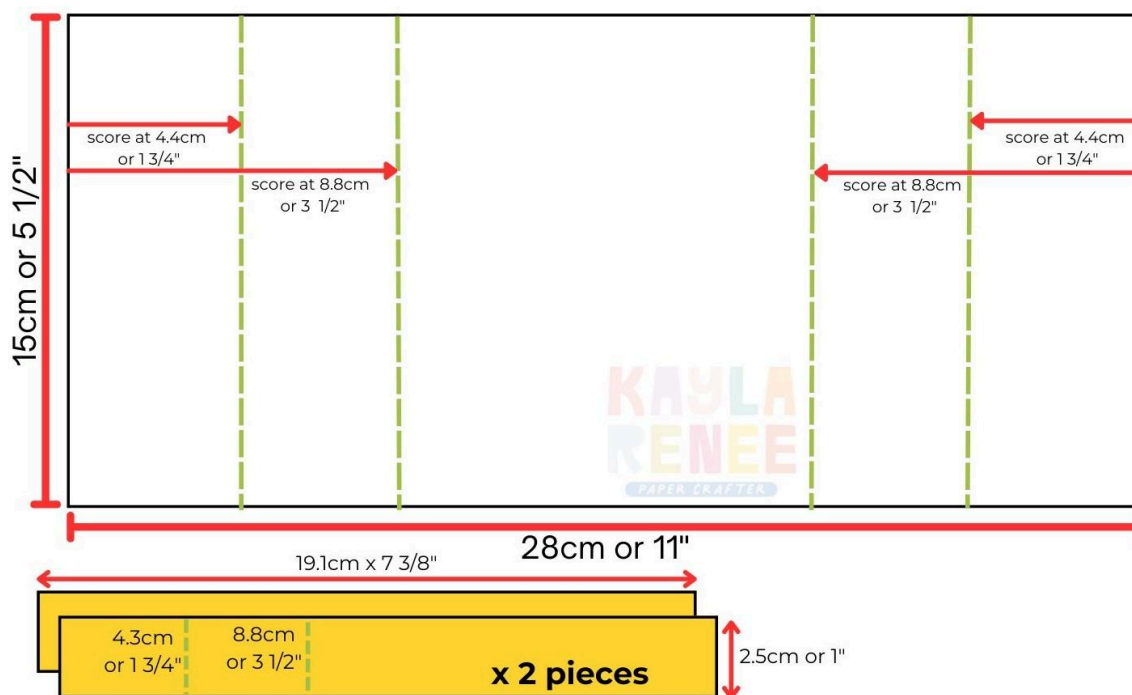


**Measurements**

Paper	No of Pieces	Metric Measurement	Imperial Measurement
<b>Wild Wheat Card Base</b>	1	15cm x 28cm Score at 4.4cm and 8.8cm from each end	5 ½" x 11" Score at 1 ¾" and 3 ½" from each end.
<b>Wild Wheat Bridge/ Z Fold Mechanisms</b>	2	2.5cm x 19.1cm Score at 4.3cm and 8.8cm	1" x 7 ¾" Score at 1 ¾" and 3 ½"
<b>Country Woods Designer Series Paper</b>	4	3.9cm x 14.5cm	5 ¾" x 1 ½"
<b>Cajun Craze Cardstock</b>	4	4.1cm x 14.7cm	5 7/8" x 1 5/8"
<b>Country Woods Designer Series Paper</b>	1	9.8cm x 9.4cm	3 ¼" x 3 ¾"
<b>Cajun Craze Cardstock</b>	1	10cm x 9.6cm	3 3/8" x 3 7/8"
<b>Basic White Cardstock</b>	1	9.7cm x 14.1cm	3 ¾" x 5 ¼"
<b>Cajun Craze Cardstock</b>	1	9.9cm x 14.3cm	3 7/8" x 5 3/8"
<b>Basic White Thick Cardstock, Crushed Curry Cardstock, Cajun Craze Cardstock, Peach Pie Glimmer, Season of Elegance Designer Paper</b>		Scraps for stamping and die cutting	Scraps for stamping and die cutting

# Instructions

1. Cut and score the card base as per the measurement guide and template provided below. Cut the two mechanism pieces and score where shown. Using the photo as a guide, adhere these to the card base applying adhesive only to the last small scored section and the other 'bridge' piece that adheres to the card.




2. Adhere all the Country Woods Designer Paper to the Cajun Craze matt layers. Adhere to the card where shown. Spritz the card base with a little bit of Wild Wheat Stampin' Blends.
3. Cut the largest circle from the Everyday Details Dies. Heat emboss the sentiment from the Autumn Expressions stamp in black. Blend the edges of the circle with some Cajun Craze and Crushed Curry Ink. Stitch the circle with some of the Copper Clay Linen Thread.
4. Adhere this circle in the centre of the card with Stampin' Dimensionals.
5. Cut a variety of leaves from the Changing Leaves bundle in; Cajun Craze Cardstock, Wild Wheat Cardstock and Peach Pie Glimmer. Add some blended ink to the Wild Wheat and Cajun Craze Leaves with darker ink.
6. Use the Hybrid Embossing Folder to emboss and cut some leaves using the Basic Beige coloured Season of Elegance Designer Paper and add

- some Wild Wheat, Cajun Craze, Crushed Curry and Real Red Ink to these pieces with a Blending Brush. Set aside.
7. Use the stamps from the Changing Leaves bundle to stamp the two outline leaf images in Copper Clay and Wild Wheat. Use a mixture of the Stampin' Blends to colour these in and add some Wink of Stella.
  8. Arrange a combination of all the leaves on the card where shown using Stampin' Dimensionals and Glue Dots, including adding some poking out underneath the sentiment circle.
  9. Embellish the card further by adding in some of the Woven Golden Leaves, adhering with Glue Dots. Add some of the Faux Glass Dots into the leaf clusters. Tie a double bow with some of the Copper Clay Jute Trim that has been pulled apart into smaller pieces. Add to the right hand side.
  10. Spritz the card with Wink of Stella.
  11. To decorate the back of the card; take the layer of Basic White and add some Real Red, Cajun Craze and Crushed Curry blending to the bottom right side. Stamp the wheat stamped image from the Autumn Expressions stamp in some Cajun Craze. Add a sentiment from the Autumn Expressions stamp in Memento Black. Add this to a layer of Cajun Craze and adhere to the back side of the card.



**VIDEO TUTORIAL CLICK:**

 Let's Create an Autumn Themed Fun Fold Card!