

# KAYLA RENEE

PAPER CRAFTER

## Frames & Flowers - Curtain Fold Card

[www.kaylarenee.com](http://www.kaylarenee.com)

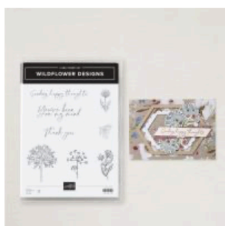


# Supply List

all supplies can be purchased in my online store find at [www.kaylarenee.com](http://www.kaylarenee.com)



Frames & Flowers  
Specialty 12" X12" (30.5 X  
30.5 Cm) Designer Series  
Paper  
[163765]



Wildflower Designs Cling  
Stamp Set (English)  
[163325]



Gold Foil Sheets  
[132622]



Baker's Twine Essentials  
Pack  
[155475]



Brushed Brass Butterflies  
[158136]



Petal Pink & Pretty  
Peacock Foiled Gems  
[162587]



Paper Butterfly Accents  
[162612]



Cream 1/4" (6.4 Mm) Woven  
Ribbon  
[164143]



Clear Wink Of Stella  
Glitter Brush  
[141897]



Distressed Tile 3D  
Embossing Folder  
[162189]



Lost Lagoon Stampin'  
Blends Combo Pack  
[161680]



Petal Pink Stampin'  
Blends Combo Pack  
[154893]



Stampin' Blends Color  
Lifter  
[144608]



Blending Brushes  
[153611]



Pretty Peacock Classic  
Stampin' Pad  
[150083]



Lost Lagoon Classic  
Stampin' Pad  
[161678]



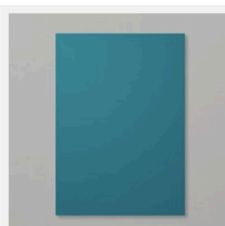
VersaMark Pad  
[102283]



Metallics Wow! Embossing  
Powder  
[165678]



Regals Stampin' Write  
Markers  
[161699]



Pretty Peacock A4  
Cardstock  
[150886]



Lost Lagoon A4 Cardstock  
[133686]



Basic Beige A4 Cardstock  
[164512]



Stampin' Dimensionals  
[104430]



Multipurpose Liquid Glue  
[110755]



Take Your Pick  
[144107]

**Kayla Renee**

You've Been on My Mind

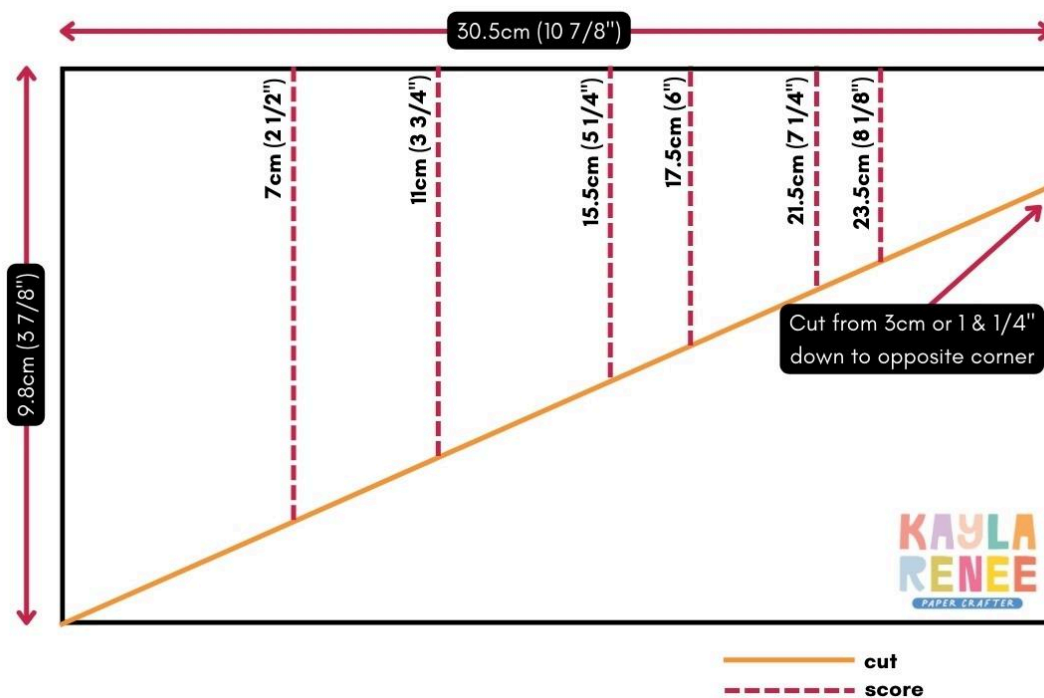


**Measurements**

Paper	No of Pieces	Metric Measurement	Imperial Measurement
<b>Pretty Peacock Card Base</b>	1	5 ½" x 8 ½" Score at 4 ¼"	14.9cm x 21cm score at 10.5cm
<b>Lost Lagoon Layer for Card Front</b>	1	4" x 5 ¼"	10cm x 14.3cm
<b>Lost Lagoon Layer for Card Front</b>	1	3 ⅞" x 5 ⅛"	9.8cm x 14.1cm
<b>Basic White for Inside of Card</b>	1	3 ⅞" x 5 ⅛"	14.1cm x 9.7cm
<b>Lost Lagoon for Inside of Card</b>	1	4" 5 ¼"	14.3cm x 9.9cm
<b>Frames &amp; Flowers Designer Paper for Card Front</b>	1	10 ⅞" x 3 ⅞" Score at 2 ½", 3 ¾", 5 ¼", 6", 7 ¼" & 8 ⅛"	9.8cm x 30.5cm Score at 7cm, 11cm, 15.5cm, 17.5cm, 21.5cm & 23.5cm
<b>Frames &amp; Flowers Paper for Inside</b>	1	½" 5 ⅛"	1.5cm x 14.1cm
<b>Gold Foil</b>	1	⅝" x 5 ¼"	.2cm x 14.1cm
<b>Basic Beige</b>		Scrap piece for sentiment	Scrap piece for sentiment

## Instructions

1. Cut and score all the layers listed above and score the card base as stated.
2. Use the Distressed Tile 3D Embossing Folder on the smaller layer of Lost Lagoon for the card front. Use a Blending Brush and Pretty Peacock Ink to add some distressing and dimension over this piece, particularly towards the bottom half. Spritz this piece with some Pretty Peacock Stampin' Write Marker and a little bit of Wink of Stella.
3. Take the large 12" (30.5cm) piece of Frames & Flowers Designer Paper cut to the dimensions as stated. Score using the measurements in the measurement guide on the long side. Accordion fold this together and distress top right corner folding over a little before adhering to the top of the embossed piece. Add a little bit of glue to the underside of each pleat to hold it down. Use the below template as a guide.



4. Adhere this layer to the large layer of Lost Lagoon. Using a Blending Brush, add a little bit of Lost Lagoon to the pleats and folds.
5. In the bottom left corner where the pleat/curtain meets the embossed panel, add some small holes using a Take Your Pick tool. With a needle and some grey Baker's Twine stitch some cross stitches. Adhere the loose threads to the back with some Tear N' Tape.
6. Take about a 20cm (8") length of the cream ribbon and fray the ribbon to be individual threads. Fold in half and use a glue dot or staple to adhere in the top right corner near the distressed flap.

7. Take a variety of the die cut greenery from the Frames & Florals pack and using some Lost Lagoon, Petal Pink, Old Olive and a Colour Lifter Stampin' Blends add some extra definition and shading to these pieces if desired. Add some Wink of Stella. Arrange these pieces and adhere where shown.
8. Adhere one of the large paper butterflies with some Liquid Adhesive.
9. Stamp the sentiment using Versamark and heat emboss in Gold on a scrap piece of Basic Beige. Fussy cut this out and adhere to the card front with some Stampin' Dimensionals.
10. Embellish the card front with some of the flowers from the die cuts and add a Pretty Peacock Foiled Gem to the centre of the flowers. To finish add some of the gold Brushed Brass Butterflies.
11. Adhere this front panel to the card base with Stampin' Dimensionals.
12. Decorate the inside of the card by adding some light blending with some Pretty Peacock Ink on the Basic White Panel. Add one of the leftover floral die cut pieces in the bottom right corner. Adhere the small strip of Frames & Flowers Designer Series Paper and small strip of Gold Foil. Spritz the panel with some Pretty Peacock Stampin' Write Marker. Adhere to the layer of Lost Lagoon and adhere inside the card.



### **VIDEO TUTORIAL CLICK BELOW**

**[▶ Curtain Fold Card](#)  [Stampin' Up! Frames & Flowers](#)**

***See next page for a scrapbook page example that inspired this card***

