

# KAYLA RENEE

PAPER CRAFTER

## Mediterranean Blooms - Side Latch Fun Fold

[www.kaylarenee.com](http://www.kaylarenee.com)



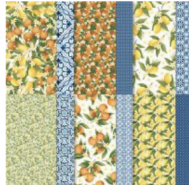
KAYLA  
RENEE  
WWW.KAYLARENEE.COM  
© STAMPIN' UP!

## Supply List

all supplies can be purchased in my online store find at [www.kaylarenee.com](http://www.kaylarenee.com)



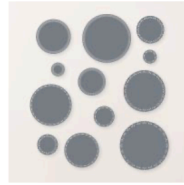
Citrus Blooms Bundle  
(English)  
[163295]



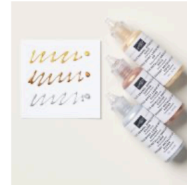
Mediterranean Blooms  
12" X 12" (30.5 X 30.5  
Cm) Designer Series  
Paper  
[163284]



Opal Rounds  
Assortment  
[163298]



Spotlight On Nature  
Dies  
[163580]



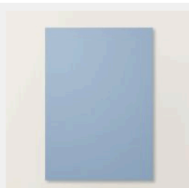
Metallic Enamel  
Effects Basics  
[161610]



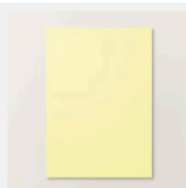
Clear Wink Of Stella  
Glitter Brush  
[141897]



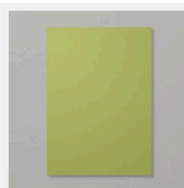
Balmy Blue A4  
Cardstock  
[147007]



Boho Blue A4  
Cardstock  
[161733]



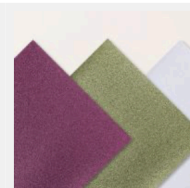
Lemon Lolly A4  
Cardstock  
[161729]



Old Olive A4 Card  
Stock  
[106576]



Basic White A4 Thick  
Cardstock  
[159230]



Berry Burst, Old Olive  
& White 12" X 12" (30.5  
X 30.5 Cm) Glimmer  
Specialty Paper  
[163769]



Lemon Lolly Classic  
Stampin' Pad  
[161666]



Pumpkin Pie Classic  
Stampin' Pad  
[147086]



Mossy Meadow Classic  
Stampin' Pad  
[147111]



Tuxedo Black  
Memento Ink Pad  
[132708]



Jet Black Stazon Ink  
Pad  
[101406]



Brights Stampin' Write  
Markers  
[161696]



Bubble Bath Stampin'  
Blends Combo Pack  
[161675]



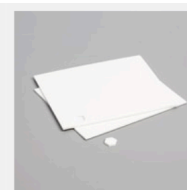
Melon Mambo  
Stampin' Blends  
Combo Pack  
[153112]



Peach Pie Stampin'  
Blends Combo Pack  
[163827]



Lemon Lolly Stampin'  
Blends Combo Pack  
[161673]



Stampin'  
Dimensionals  
[104430]



Multipurpose Liquid  
Glue  
[110755]



Kayla Renee

All The Love

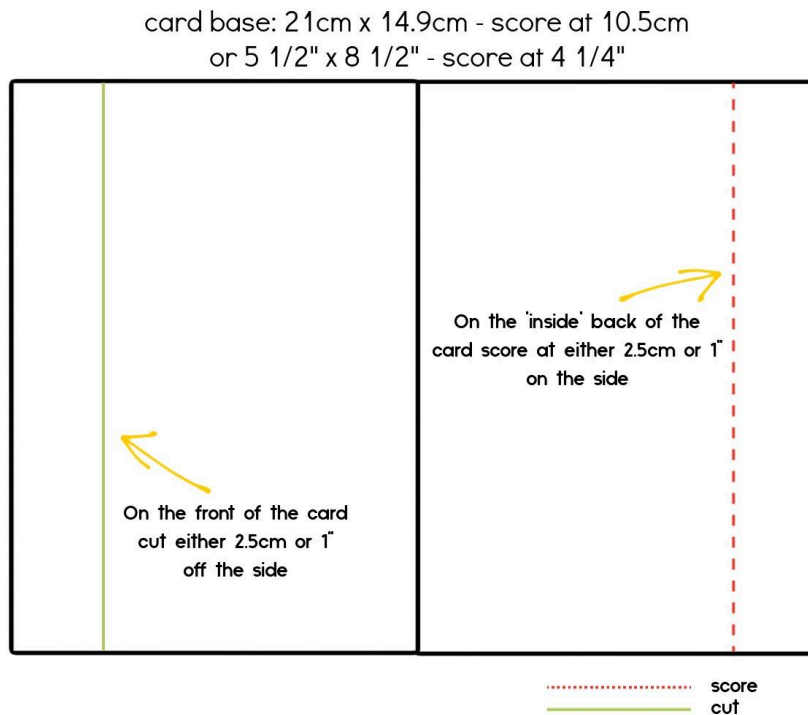


## Measurements

Paper	No of Pieces	Metric Measurement	Imperial Measurement
<b>Boho Blue Card Base</b>	1	21cm x 14.9cm score at 10.5cm and score at 2.5cm on back of card and cut 2.5cm off the front of card	5 1/2" x 8 1/2" score at 4 1/4" Score at 1" on back of card and cut 1" off the front of the card
<b>Balmy Blue Large Cardstock</b>	2	14.7cm x 7.8cm	3 1/8" x 5 3/8"
<b>Basic White Cardstock</b>	1	14.5cm x 7.6cm	3" x 5 1/4"
<b>Designer Series Paper for Front</b>	1	14.5cm x 7.6cm	3" x 5 1/4"
<b>Designer Series Paper for Inside</b>	1	14.7cm x 7.8cm	3 1/8" x 5 3/8"
<b>Balmy Blue for Small Side Latch</b>	1	2.3cm x 14.7cm	7/8" x 5 3/8"
<b>Designer Series Paper for Side Latch</b>	1	2.1cm x 14.5cm	3/4" x 5 1/4"
<b>Designer Series Paper Strip</b>	1	1cm x 14.5cm	1/4" x 5 1/4"

# Instructions

1. Take the Boho Blue card base and use the measurements in the measurement guide above or the template below to score and cut the card base. Reinforce the score lines with a bone folder well. The scored side latch needs to be folded back on itself.



2. Cut all the layers of cardstock and Designer Series Paper. Adhere the Designer Series Paper for the front panel of the card and for the side latch to their corresponding layers of Balmy Blue cardstock. Adhere these panels to the front of the card and on the side panel. Adhere the layer of Designer Series Paper for the inside of the card to the left hand side of the inside (this piece does not get matted on Balmy Blue)
3. Take the layer of Basic White cardstock and using a Blending Brush add some Lemon Lolly and Pumpkin Pie ink in the bottom right hand corner. Spritz some Daffodil Delight Stampin' Write Marker to this piece. Cut a lemon/greenery from the Designer Series Paper (you only want a small piece) and adhere this to the edge of the left hand side of the Basic White. Adhere the small Designer Paper Strip to the left hand side where shown. Stamp the sentiment for the inside in StazOn ink. Adhere this to the layer of Balmy Blue and then adhere to the inside of the card.
4. Die cut out one of the circles from the Spotlight on Nature dies in Lemon Lolly Cardstock. Using a Blending Brush, add some Pumpkin Pie ink to the edges of the circle. Add some liquid glue to a small portion of the right hand edge of this circle and place it to the bottom right hand side of the card **adhering the sticky part of the circle only to the side latch panel.**

5. Fussy cut out some lemons from the Designer Series Paper. I have fussy cut one whole singular lemon and a piece from the side of the paper to join them together and make the most of the Designer Series Paper. Place these on top of the die cut circle to work out positioning. Adhere the bottom lemon to the circle with Liquid Glue. Adhere the other lemon over the top with Stampin' Dimensionals.
6. Die cut out three greenery pieces from the coordinating dies with Old Olive cardstock. Using a Blending Brush add some Mossy Meadow Ink to the edges. Tuck these die cut pieces to the die cut circle where shown.
7. Stamp the sentiment in StazOn ink on Basic White cardstock. Trim this down and cut the ends on an angle. Adhere to the card where shown with Stampin' Dimensionals.
8. Stamp three small flowers and two large flowers on Basic White Thick in Memento Black. Colour these with a mixture of; Bubble Bath, Melon Mambo, Lemon Lolly and Peach Pie Stampin' Blends. Adhere where shown (including two on the inside) and add Wink of Stella to the flowers.
9. Die cut out 6 of the small die cut flowers from Berry Burst Glimmer Paper. Adhere where shown including one on the inside of the card.
10. Add some gold metallic enamel effects to the centres of the pink glimmer flowers and add some Opal Rounds in yellow to the centre of the coloured flowers and spritz the card with Wink of Stella.



## **VIDEO TUTORIAL CLICK BELOW**

**📺 Side Latch Fun Fold 🍋🍋 using Stampin' Up! Mediterranean Blooms**