

KAYLA RENEE

PAPER CRAFTER

Hearts & Hugs - Secret Fold Out Card

www.kaylarenee.com

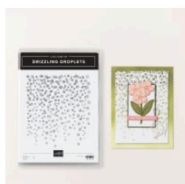


Supply List

all supplies can be purchased in my online store find at www.kaylarenee.com



Hearts & Hugs Bundle
(English)
[163667]



Drizzling Droplets
Cling Stamp Set
[163523]



Dotted Circles 3 D
Embossing Folder
[163789]



Spotlight On Nature
Dies
[163580]



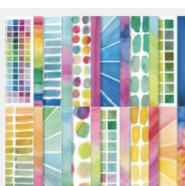
2024-2026 In Color™
Glimmer 12" X 12" (30.5
X 30.5 Cm) Specialty
Paper
[163771]



Iridescent Adhesive
Backed Discs
[161954]



Clear Wink Of Stella
Glitter Brush
[141897]



Full Of Life 6" X 6" (15.2
X 15.2 Cm) Designer
Series Paper
[163357]



VersaMark Pad
[102283]



Basics Wow!
Embossing Powder
[165679]



Lemon Lime Twist
Classic Stampin' Pad
[147145]



Shaded Spruce Classic
Stampin' Pad
[147088]



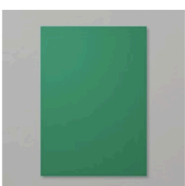
Petunia Pop Classic
Stampin' Pad
[163811]



Tuxedo Black
Memento Ink Pad
[132708]



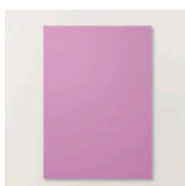
Lemon Lime Twist A4
Cardstock
[144250]



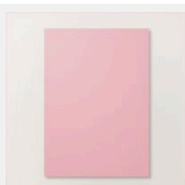
Shaded Spruce A4
Cardstock
[147006]



Basic White A4 Thick
Cardstock
[159230]



Petunia Pop A4
Cardstock
[163802]



Pretty In Pink A4
Cardstock
[163794]



Smoky Slate Stampin'
Blends Combo Pack
[154904]



Gray Granite Stampin'
Blends Combo Pack
[154886]



Petunia Pop Stampin'
Blends Combo Pack
[163828]



Pretty In Pink
Stampin' Blends
Combo Pack
[163824]



Bronze & Ivory
Stampin' Blends
Combo Pack
[154922]



Crumb Cake Stampin'
Blends Combo Pack
[154882]



Copper Clay Stampin'
Blends Combo Pack
[161662]



Stampin' Blends Color
Lifter
[144608]



Calypso Coral
Stampin' Blends
Combo Pack
[154881]



Stampin'
Dimensionals
[104430]



Multipurpose Liquid
Glue
[110755]

Kayla Renee

I Could Just Hug You

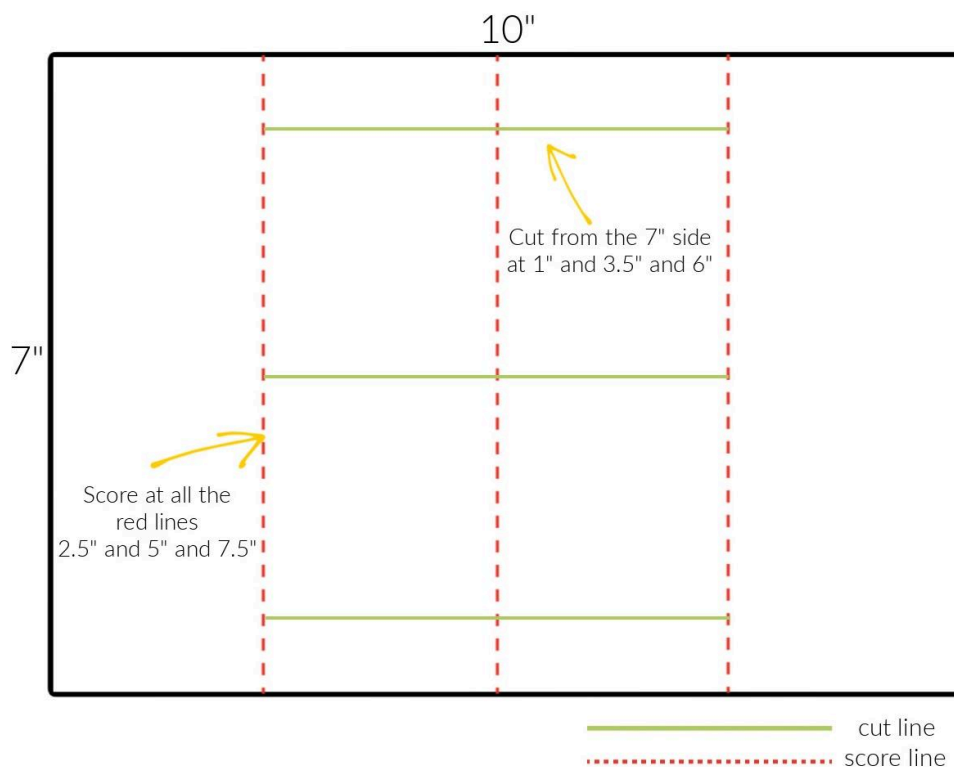


Measurements

Paper	No of Pieces	Imperial Measurement
Shy Shamrock Card Base	1	7" x 10" scored at 2.5", 5" and 7.5" Cut between first and last score line 1", 3.5" and 6" (see diagram)
Shy Shamrock Belly Band	1	2" x 11"
Shy Shamrock for Card Front	1	5" x 7" - this will be cut down after embossing
Shy Shamrock for Inside Card Panels	2	2 3/8" x 6 7/8"
Basic White Thick for Inside Mechanism	2	2 3/8" x 7"
Full of Life Designer Series Paper Large Squares	4	2 3/8" x 2 3/8"
Full of Life Designer Series Paper Small Rectangles	4	7/8" x 2 3/8"
Shy Shamrock Layer for Belly Band	1	5" x 1 7/8"
Full of Life Designer Series Paper for Belly Band	1	4 7/8" x 1 3/4"

Instructions

1. Take the Shy Shamrock card base and with the 10" side at the top of the paper trimmer, score at 2.5", 5" and 7.5". Turn the cardstock around and with the 7" side at the top of the trimmer cut in between the first and last score lines at 1", 3.5" and 7.5". Reinforce the score lines with the first and last section as a valley fold and the middle fold a mountain fold.



2. Take the two small Shy Shamrock inside panels and use the Drizzling Droplets stamp to stamp the top of each panel with Versamark and heat emboss with clear embossing powder. Once embossing is dry, add a small amount of Shy Shamrock Ink with a Blending Brush around the edges of the pieces. Adhere the two panels to the inside of both card flaps.
3. Take the large 5x7" Shy Shamrock panel and using the Dotted Circles 3D embossing folder, add Versamark over the entire side of the embossing folder that has the Stampin' Up! logo. Emboss this panel. Add clear embossing powder over the piece and heat emboss. Cut this panel at 2.5" (in half). Trim $\frac{1}{8}$ " off the bottom of each panel and $\frac{1}{8}$ " off the outer side of each piece. Adhere these to the front flaps of the card meeting in the middle with no gap.
4. Take the two Basic White panels for the mechanism and thread these through the two middle scored panels. This is a bit of a weaving technique. For the left hand side panel go under the first Shy Shamrock strip, over, under and then over. For the right hand side section do the

- opposite and go over, under, over and then under. This creates the mechanism where you will be able to have a 'secret' section to your card.
5. The next step is to adhere all the Designer Series Paper. Take the squares and rectangles of designer paper. Adhere them in the respective sections on the middle two sections of the card. Open the secret section and adhere the designer paper to the Shy Shamrock panels here also.
 6. Using a pencil, make a mark (optional) where the stamping will be required on the mechanism. For this card it is in the bottom small rectangle and top small rectangle on the first section and for the 'secret' section it will be the same. Remove mechanism pieces and stamp. I stamped a set of love hearts on the bottom left section of the first opened scene and in the top right of the second opened scene. I also stamped the greetings in Shy Shamrock Ink where shown. You can rub out the pencil marks and place these mechanisms back into the card. **Please note:** If you plan on using Stampin' Blends - these are likely to bleed through and show to the back section. You can alleviate this by cutting two of the Basic White mechanism pieces and putting them back to back for each piece.
 7. Stamp all the animals from the Hearts & Hugs stamp set in Memento Black on some Basic White Thick Cardstock. Colour them using a variety of Stampin' Blends as listed and die cut. Adhere them where shown.
 8. Decorate the card with some additional die cut pieces. On one of the squares I used an assortment of die cuts from the Hearts & Hugs dies using Lemon Lime Twist, Petunia Pop and Pretty in Pink. Add the Iridescent Adhesive Backed Discs to the flower centres. Embellish with some Wink of Stella
 9. To create a belly band I have taken the large piece and 'wrapped around' the card - reinforcing the fold with the scoring blade of the trimmer. Make sure not to make the belly band too tight. Adhere the designer paper to the layer of Shy Shamrock and adhere this to the belly band.
 10. Die cut out the third smallest circle from the Spotlight on Nature Dies in Lemon Lime Twist. Add some Lemon Lime Twist Ink around the edges of this die. Adhere a die cut banner with the Shy Shamrock Glimmer Paper to the back of this circle so the ends peek out. Adhere this to the middle of the belly band with Stampin' Dimensionals.
 11. Die cut the walrus and adhere to the belly band where shown with Stampin' Dimensionals. Add some additional die cut flowers and hearts and decorate the centres of the flowers with the Adhesive Backed Iridescent Discs. Stamp the sentiment in Shy Shamrock and adhere where shown.



VIDEO TUTORIAL CLICK BELOW

📺 Secret Fold Out Card 🐭🐿 Using Stampin' Up! Hearts & Hugs